

Testul nr. 2.

1.  $\Delta$ . 345 678

2. 147; 829

3. B. 404 004

4. 98 888

5. 90 009

6.  $\Delta$ .  $9000 + 700 + 50 + 3$

7.  $450 \square 540$

$8190 \square 1900$

$7733 \square 7733$

8.  $24\ 019 \rightarrow 24\ 000$

$805\ 673 \rightarrow 806\ 000$

$9\ 286 \rightarrow 9\ 000$

9.  $a - 942 = 489$

$a = 489 + 942$

$a = 1431$

10. C. 65

$\Delta : 7 = 9 \text{ r } 2 \Rightarrow \Delta = 9 \times 7 + 2 = 63 + 2 = 65$

11. C. 835 000

12. 9

13. C. 999

$CMXCIX = 1000 - 100 + 100 - 10 + 10 - 1 = 999$

14. 150

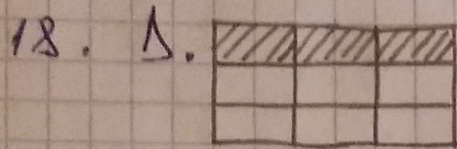
15. B. 5 ore ( $300 : 60 = 5 \text{ ore}$ )



16.

$170 : 10 =$	$\rightarrow$	180
$170 + 10 =$	$\rightarrow$	1700
$170 \times 10 =$	$\rightarrow$	17
$170 - 10 =$	$\rightarrow$	160

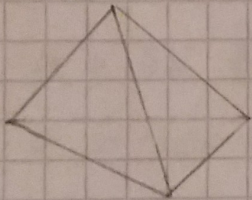
17. C. 3, 2, 1



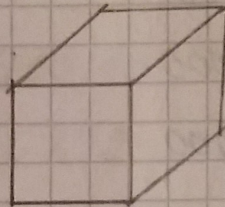
19. C. 1h și 10 min

$$17:40 - 16:30 = 1:10$$

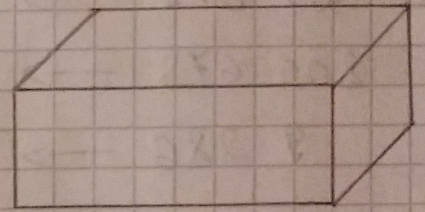
20.



piramidă



cube



cuboid