

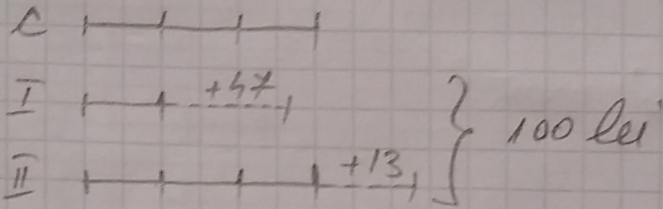
$$131/170 \quad \underline{I} + \underline{II} = 100 \text{ lei}$$

$$\underline{I} - 47 = C:3 \Rightarrow \underline{I} = C:3 + 47$$

$$\underline{II} - 13 = C \Rightarrow \underline{II} = C + 13$$

$$\underline{I}, \underline{II} = ?$$

Rezolvare



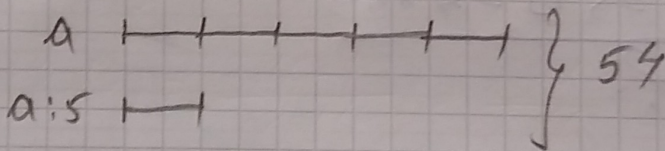
$$100 - 47 - 13 = 53 - 13 = 40 \text{ lei (4 seg. egale)}$$

$$40 : 4 = 10 \text{ lei (1 segment)}$$

$$10 + 47 = 57 \text{ lei are } \underline{I} \text{ elev}$$

$$10 \times 3 + 13 = 30 + 13 = 43 \text{ lei are al } \underline{II}\text{-lea elev.}$$

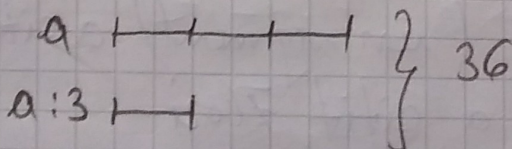
$$132/170 \quad a + a:5 = 54$$



$$54 : 6 = 9 \text{ (un segment)}$$

$$a = 5 \times 9 = 45$$

$$133/170 \quad a + a:3 = 36$$



$$36 : 4 = 9 \text{ (un segment)}$$

$$a = 9 \times 3 = 27$$

134/170

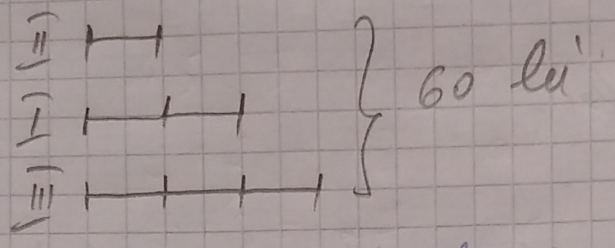
$$\underline{I} + \underline{II} + \underline{III} = 60 \text{ lei}$$

$$\underline{I} = 2 \times \underline{II}$$

$$\underline{III} = 3 \times \underline{II}$$

$$\underline{I}, \underline{II}, \underline{III} = ?$$

Rezolvare



$60 : 6 = 10$ lei (un segment) are al II-lea elev
 $10 \times 2 = 20$ lei are I elev
 $10 \times 3 = 30$ lei are al III-lea elev

135/170

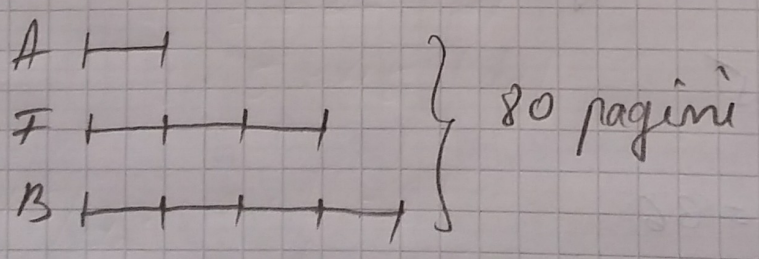
$$F + A + B = 80 \text{ pagini}$$

$$A = F : 3 \Rightarrow F = 3 \times A$$

$$A = B : 4 \Rightarrow B = 4 \times A$$

$$A, F, B = ?$$

Rezolvare



$80 : 8 = 10$ pagini (un segment) a citit Andrei
 $10 \times 3 = 30$ pagini a citit Flori
 $10 \times 4 = 40$ pagini a citit Bogdan

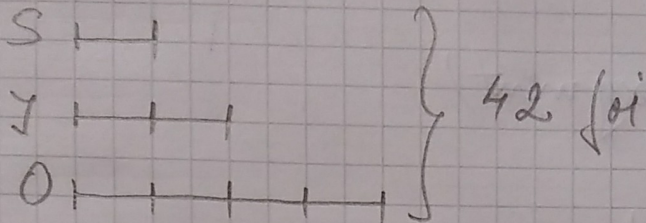
$$136/170 \quad J + S + O = 42 \text{ foi de varșă}$$

$$S = J : 2 \Rightarrow J = S \times 2$$

$$S = O : 4 \Rightarrow O = S \times 4$$

$$J, S, O = ?$$

Rezolvare



$$42 : 7 = 6 \text{ foi (un segment) are Scubi}$$

$$6 \times 2 = 12 \text{ foi are Jepurila}$$

$$6 \times 4 = 24 \text{ foi are Oli}$$

$$137/170 \quad m + \Delta + c = 100$$

$$\Delta = 3 \times c$$

$$\Delta = m : 2 \Rightarrow m = \Delta \times 2$$

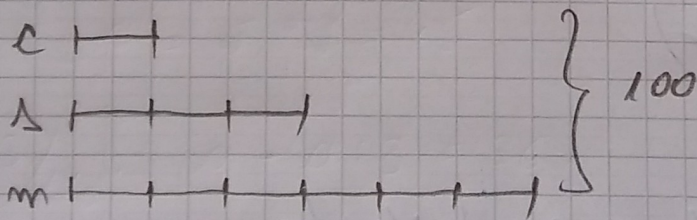
$$m, \Delta, c = ?$$

m = stelute de mare

Δ = scoici

c = corali

Rezolvare



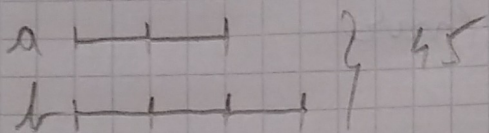
$$100 : 10 = 10 \text{ (un segment) corali}$$

$$10 \times 3 = 30 \text{ scoici}$$

$$10 \times 6 = 60 \text{ stelute de mare}$$

$$138/170. \quad \begin{array}{l} a + b = 45 \\ a : 2 = b : 3 \\ \hline a, b = ? \end{array}$$

Rezolvare.



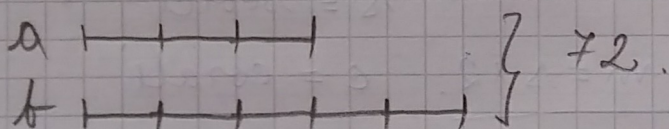
$$45 : 5 = 9 \text{ (un segment)}$$

$$9 \times 2 = 18 \text{ (a)}$$

$$9 \times 3 = 27 \text{ (b)}$$

$$139/170. \quad \begin{array}{l} a + b = 72 \\ a : 3 = b : 5 \\ \hline a, b = ? \end{array}$$

Rezolvare.



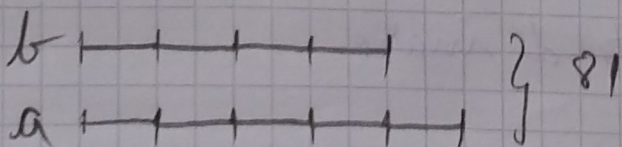
$$72 : 8 = 9 \text{ (un segment)}$$

$$9 \times 3 = 27 \text{ (a)}$$

$$9 \times 5 = 45 \text{ (b)}$$

$$140/170. \quad \begin{array}{l} a + b = 81 \\ a - b = b : 4 \Rightarrow a = b : 4 + b \\ \hline a, b = ? \end{array}$$

Rezolvare.



$$81 : 9 = 9 \text{ (un segment)}$$

$$9 \times 4 = 36 \text{ (b)}$$

$$9 \times 5 = 45 \text{ (a)}$$

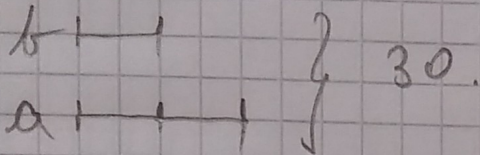
141 / 170

$$a + b = 30$$

$$a - b = b \Rightarrow a = b + b = 2 \times b$$

$$\underline{a, b = ?}$$

Risolvere



$$30 : 3 = 10 \text{ (un segment) } (b)$$

$$10 \times 2 = 20 \text{ (a)}$$